



Exhibition Services

展覽服務

Additional Booth Facilities

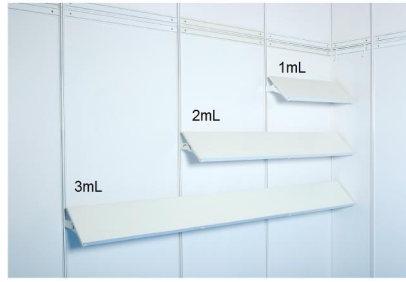


www.hktdc.com





FA007 1mL x 0.3D
Wooden Display Shelf - Flat
 (1mL x 0.3mD, Max. Loading 3kg per metre)
 平放式木層板 (1米長 x 0.3米深，
 最大承重3公斤/每米計算)



FA008 1mL x 0.3D
Wooden Display Shelf - Slope (1mL x 0.3mD,
 Max. Loading 3kg per metre)
 斜放式木層板 (1米長 x 0.3米深，
 最大承重3公斤/每米計算)



FA009
Wooden Display Shelf with Structure
Pole Mounted - Flat (1mL x 0.5mD,
 Max. Loading 10kg per metre)
 平放式木層板 (1米長 x 0.5米深，
 最大承重10公斤/每米計算)



FA010
Glass Display Shelf - Flat
 (1mL x 0.3mD, Max. Loading 2kg per metre)
 平放玻璃層板 (1米長 x 0.3米深，
 最大承重2公斤/每米計算)



FA011
Glass Display Shelf with Structure
Pole Mounted - Flat
 (1mL x 0.5mD, Max. Loading 5kg per metre)
 平放玻璃層板 (1米長 x 0.5米深，
 最大承重5公斤/每米計算)



FA013 / FA013A
Cabinet with Sliding Doors
 (1mL x 0.5mW x 0.75mH / 1mH)
 儲物櫃 (1米長 x 0.5米闊 x 0.75米高 / 1米高)



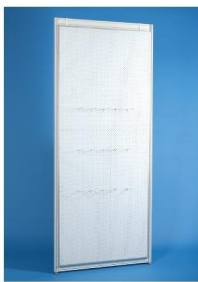
FA014 / FA014A
Table Showcase (1mL x 0.5mD x 0.75mH / 1mH)
 陳列飾櫃檯 (1米長 x 0.5米闊 x 0.75米高 / 1米高)



FA015
Table Showcase Counter
 (1mL x 0.5mD x 1mH)
 陳列飾櫃連三面側板 (腳檯)
 (1米長 x 0.5米闊 x 1米高)



FA017
Tall Showcase -
 2 Layers of Glass Shelf, 2 x 50 Watt
 Halogen Downlights (Yellow Light)
 (1mL x 0.5mD x 2.5mH)
 高身陳列飾櫃連兩層玻璃層板及兩盞50瓦特
 鹵素射燈 (黃光) (1米闊 x 0.5米深 x 2.5米高)



FA020
Pegboard with 30 Hooks (1mL x 2.5mH)
 有孔陳列板連30個掛鉤 (1米闊 x 2.5米高)



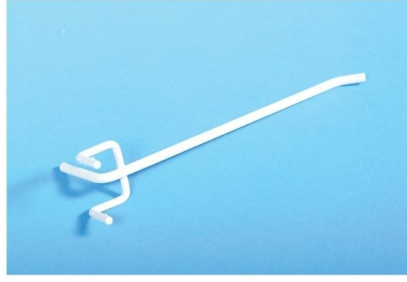
FA021
Pegboard with 30 Hooks (1mL x 1.75mH)
 (Cabinet excluded)
 有孔陳列板連30個掛鉤
 (1米闊 x 1.75米高，不包括地櫃)



FA022
Pegboard with 30 Hooks (0.5mL x 2.5mH)
 有孔陳列板連30個掛鉤 (0.5米闊 x 2.5米高)



FA022A
Pegboard with 30 Hooks (0.5mL x 1.75mH)
有孔陳列板連30個掛鉤 (0.5米闊 x 1.75米高)



FA023
Pegboard Hook (For FA020, 021, 022, 022A only)
有孔陳列板掛鉤 (只供FA020, 021, 022, 022A 的
有孔陳列板使用)



FA024
Garment Hanging Rack (1mL)
(Plastic Garment Hanger excluded)
掛衣通 (1米長) (不包括衣架)



FA025 A
Vertical Garment Hook x 1 on clothes rod (1 set)
曲衣架連斜衣鉤一個



FA025
Vertical Garment Hook
斜衣鉤



FA026
Square Meeting Table
(0.7mL x 0.7mD x 0.75mH)
會議桌 (正方檯) (0.7米長 x 0.7米闊 x 0.75米高)



FA027
Rectangular Table (1mL x 0.5mD x 0.75mH)
諮詢檯 (長方檯) (1米長 x 0.5米闊 x 0.75米高)



FA028 / FA028A
Information Counter (1mL x 0.5mD x 0.75mH/1mH)
諮詢檯連三面側板 (腳擋)
(1米長 x 0.5米闊 x 0.75米高/1米高)



FA029
Black Leather Chair
黑色皮椅



FA030
Black Bar Stool (adjustable height)
吧椅



FA031
White Folding Door (1mL x 2mH)
摺門 (1米闊 x 2米高)



FA032
Wooden Swinging Door (1mL x 2mH)
掩門 (1米闊 x 2米高)



FA033
Smoked Glass Swinging Door (1mL x 2mH)
玻璃門 (1米闊 x 2米高)



FA034
Partition Panel (0.5mL x 2.5mH)
間格用半米圍板 (0.5米闊 x 2.5米高)



FA035
Partition Panel (1mL x 2.5mH)
間格用一米圍板 (1米闊 x 2.5米高)



FA036
Acrylic Panel (0.5mL x 2.5mH)
透明膠片 (0.5米闊 x 2.5米高)



FA037
Acrylic Panel (1mL x 2.5mH)
透明膠片 (1米闊 x 2.5米高)



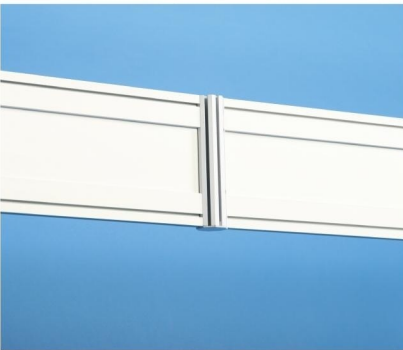
FA038
Smoked Acrylic Panel (0.5mL x 2.5mH)
磨砂膠片 (0.5米闊 x 2.5米高)



FA039
Smoked Acrylic Panel (1mL x 2.5mH)
磨砂膠片 (1米闊 x 2.5米高)



FA040
Ceiling Beam (1mL x 70mmH)
天花橫樑 (1米長 x 70毫米高)



FA041
Ceiling Beam (1mL x 175mmH)
天花橫樑 (1米長 x 175毫米高)



FA042
Ceiling Grid per Square Metre (With metal mesh on top), 175mmH
天花格(每平方米)(175毫米高) (連網格)



FA043
Catalogue Display Rack,
4 x A4 Size Compartments, (1mL)
A4 文件架 x 4格 (1米長)



FA044
Pentagonal Display Platform (0.75mH)
五方展示台 (0.75米高)



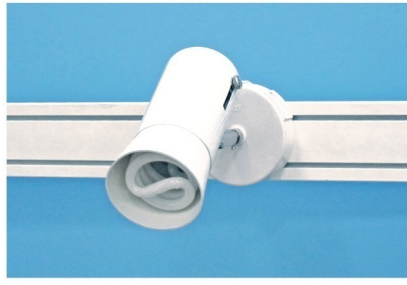
FA047
Round Table
(700mm Diameter x 725mm Height)
圓桌 (700mm直徑 x 725mm高)



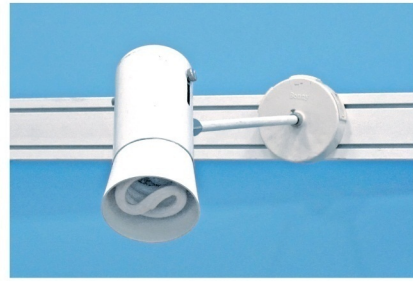
FA051
Clothes Rod with 4 Hooks (1mL)
曲衣架連4隻掛衣鉤(1米長)

**LG006/LG026/LG027 /LG028**

500/1000/2000/3000 Watt Square Pin Power Socket (220V) for One Electrical Appliance only (Not permitted for Lighting connection)
 只供一件電器用500/1000/2000/3000 瓦特電源方腳插座 (220伏特) (不可用於照明裝置)

**LG011**

Spotlight 23 Watt Energy Saving Lamp (Yellow Light)
 短臂射燈 (23瓦特慳電燈膽) (黃光)

**LG012**

Long Armed Spotlight (300mm) 23 Watt Energy Saving Lamp (Yellow Light)
 長臂射燈 (約長300mm) (23瓦特慳電燈膽) (黃光)

**LG014**

Fluorescent Tube (1200mL) (White Light)
 光管 (1200mm長) (白光)

**LG015**

Halogen Tracklight 50 Watt on 1 Metre Track (Yellow Light)
 鹵素路軌燈(黃光) (50瓦特) 連一米長路軌

**LG016**

Halogen Downlight 50 Watt for Tall Showcase FA017 (Yellow Light)
 供FA017高身陳列飾櫃專用之鹵素射燈(黃光)(50瓦特)

**LG021**

Recess Downlight 23 Watt for Tall Showcase
 隱藏式射燈23瓦特慳電燈膽 (黃色)

**LG022/LG023**

Halogen Floodlight 300/500 Watt, Adjustable Angle (Yellow Light)
 鹵素泛光燈, 俗稱「小太陽」(300/500瓦特) (黃光)

**LG024**

HQI Floodlight 250 Watt, Adjustable Angle (White Light)
 HQI白光燈 (250瓦特) (白光)

**LG025**

HQI Floodlight 70 Watt (White Light) (Inside Tall Showcase (FA017))
 HQI白光燈 (70瓦特) (白光)
 (供FA017高身陳列飾櫃照明用)



MS001
Bust with stand - Male Body, Black Colour
半身模特兒連企座 - 男身，黑色



MS002
Bust with stand - Female Body, Black Colour
半身模特兒連企座 - 女身，黑色



MS003
Plastic Garment Hanger (10 Pieces) - Black Colour
塑膠製衣架 (每十個計) - 黑色



MS005
Movable Mirror
活動全身鏡



MS006
Movable Garment Hanging Rack (1215-1830mmL x 460mmW x 1130-1850 mmH)
活動掛衣通 (1215-1830毫米長 x 460毫米闊 x (1130-1850)毫米高)



PL001A
Potted Plant - Chrysalidocarpus (1mH)
盆栽 - 散尾葵 (1米高)



PL001B
Potted Plant - Schefflera (Gold Capella) (0.3mH)
盆栽 - 傘樹 (0.3米高)



PL001C
Potted Plant - Boston Fern (0.3mH)
盆栽 - 波士頓芒 (0.3米高)



PL001D
Potted Plant - Codiaeum Tree (0.3mH)
盆栽 - 酒金 (0.3米高)

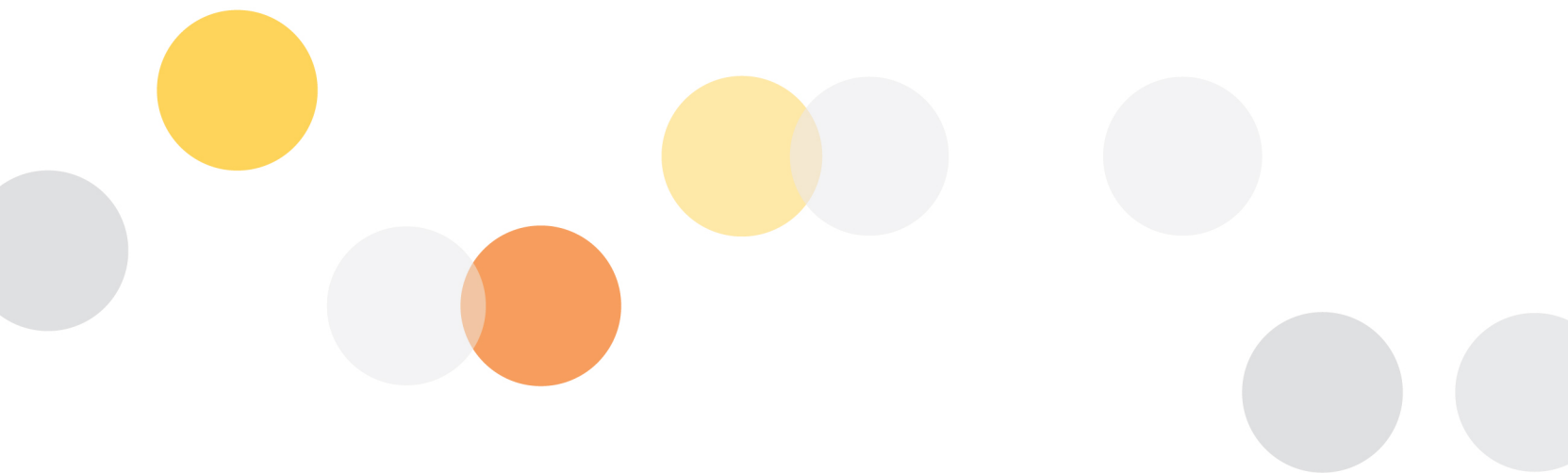
Facilities photo for reference only, the information is subject to change without prior notice.
設施相片只供參考，如有任何改動不會另行通知。



Additional Booth Facilities 額外攤位設備
The Hong Kong Trade Development Council reserves the right to change configuration of booth and services/equipment providing if necessary.
如有需要，香港貿發局有權更改有關攤位結構及設施/服務供應。



PL002
Fresh Flower Arrangement (approx. 0.3mH)
鮮花擺設(約0.3米高)
(photo for reference only) (相片僅供參考)



香港貿易發展局

Hong Kong Trade Development Council 香港貿易發展局
83 Chun Yat Street, Tseung Kwan O Industrial Estate,
Tseung Kwan O, Kowloon, Hong Kong
香港九龍將軍澳將軍澳工業村駿日街83號
Tel: (852) 2240 5499 Fax: (852) 3521 0450

www.hktdc.com

